


**CERNiT**<sup>®</sup>  
 PREMIUM MODELLING CLAY



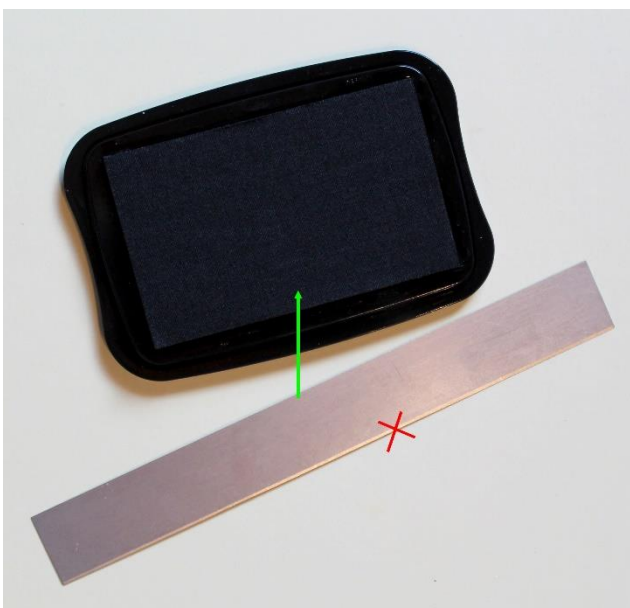
CERNIT : Translucent 005 - Lime green 601 - Opaque white 027 - CERNIT : Kit finish glass

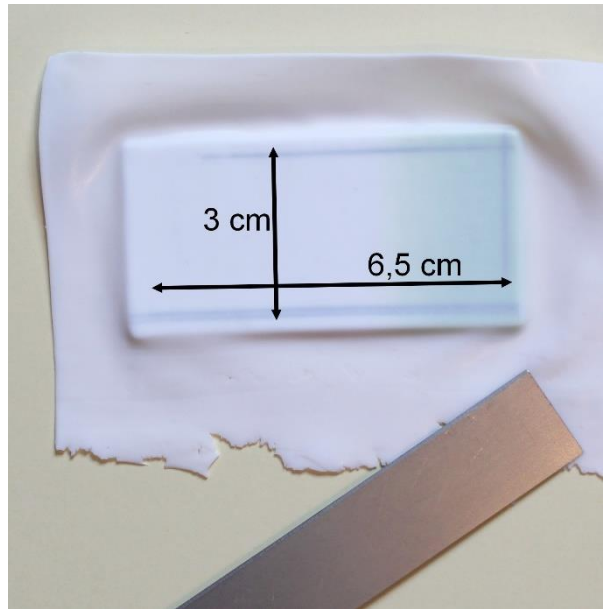
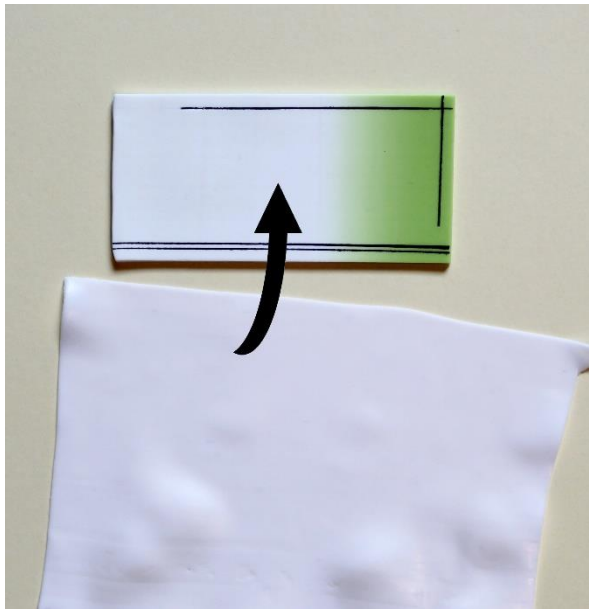
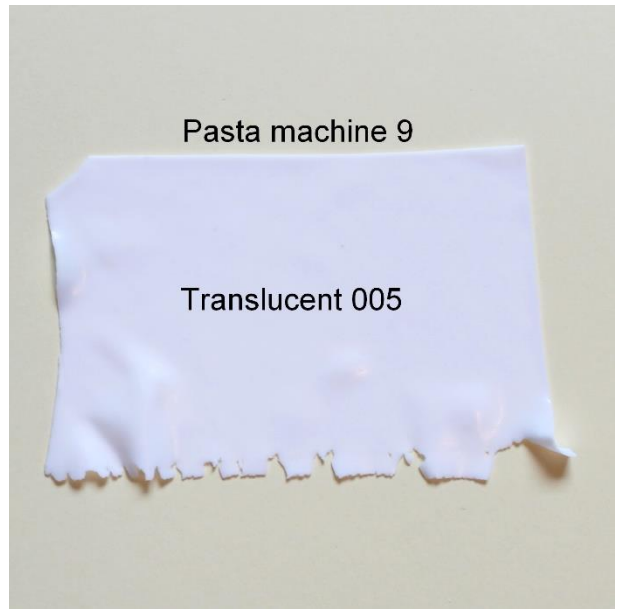
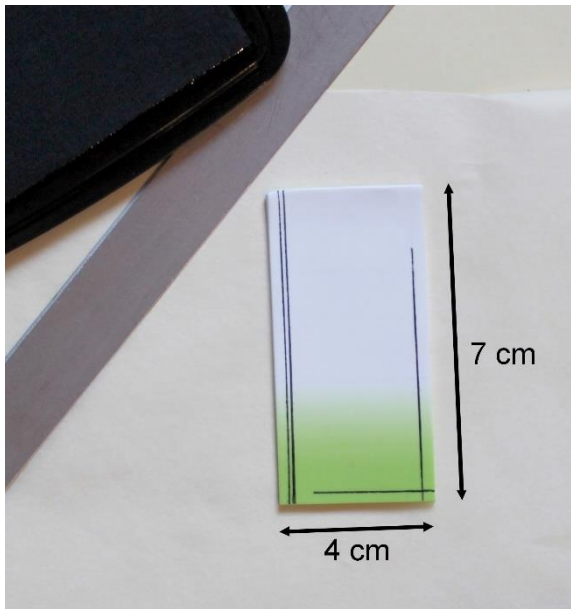
DARWI ARMERINA : Light green 611 - Vermillon 490

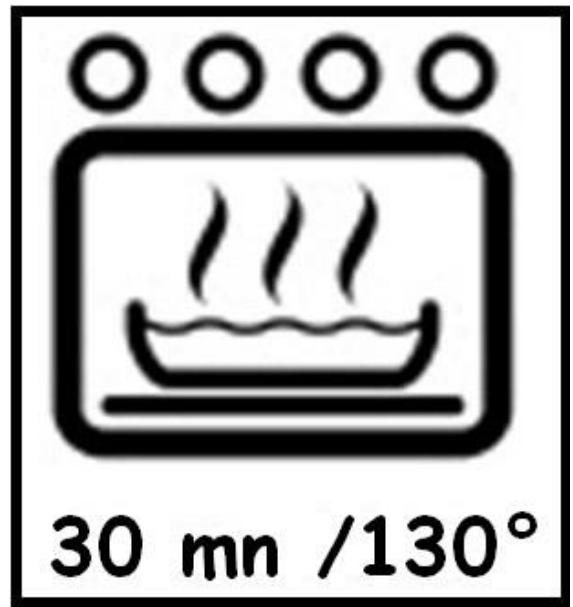
Pasta machine 3  
Opaque white 027



Lime green 601







With Glue Loctite



Let dry 72 hours

